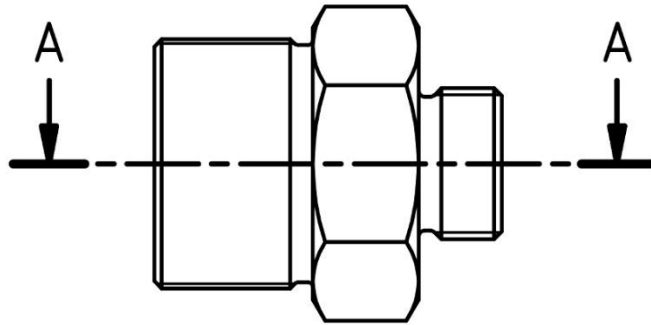
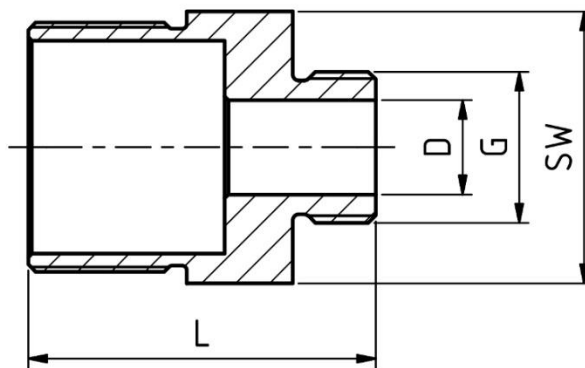


Adapter



A-A (1 : 1)



	Gewinde G Thread G	D [mm]	L [mm]	SW [mm]	Typ Type
metrisch metric	M16x1,5	8,00	48	36	710-00-82-M2
	M20x1,5	12,50	46		710-00-82-M3
	M30x2		45		710-00-82-M4
zöllig imperial	9/16"-18 UNF	8,00	48	36	710-00-82-U2
	3/4"-16 UNF	12,50	46		710-00-82-U3
	1 1/8"-12 UNF		45		710-00-82-U4